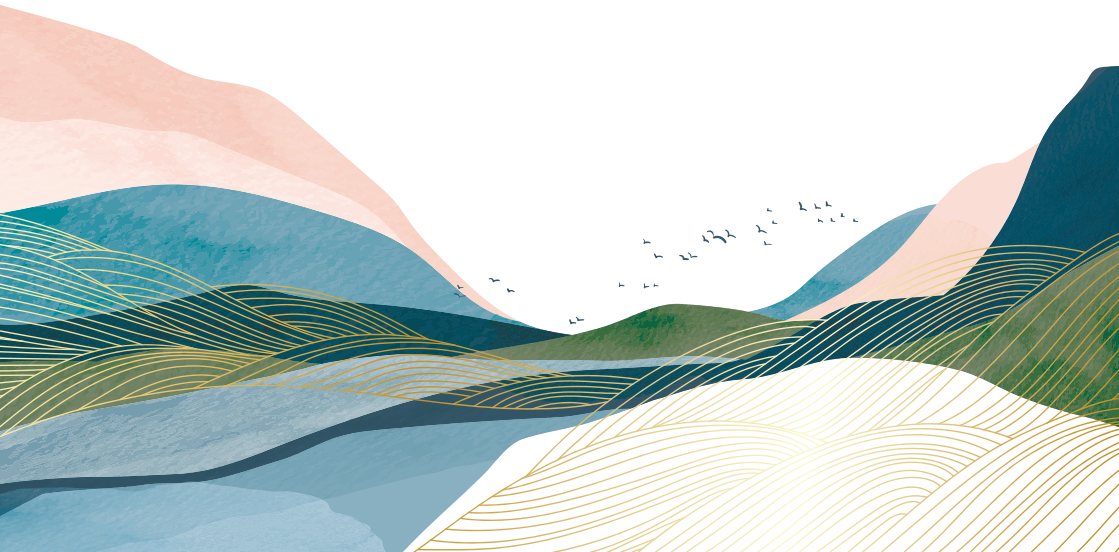


— ROOM WITH A —
VIEW
— & —
Hawaii's Bar

DRINKS MENU



WINE

SPARKLING

Freixenet Prosecco *Italy (11%)*

Golden straw colour with lively effervescence and fresh aromas of citrus, apple and flowers. Clean and fresh on the palate with tones of ripe lemon, green apple and grapefruit. The finish is light and fresh.

Single serve bottle **8.50**

Freixenet Italian Sparkling Rosé *Italy (11%)*

With delicate pink hues, Freixenet Italian Sparkling Rosé is light and effervescent. Enjoy notes of fresh red berries and underlying hints of white flowers and apples.

Single serve bottle **8.50**

Chio Prosecco *Italy (11%)*

With fresh, zesty aromas and flavours of citrus and green fruit on the palate, this crisp wine boasts a pleasant finish.

Bottle **25.60**

Madam Sass Prosecco Rosé *Italy (11%)*

Full of effervescence and attitude! A delicate pink colour, fine, creamy-white and persistent bubbles. Notes of red berries and flowers on the nose followed by a swathe of soft summer fruits on the palate.

Bottle **25.60**

Joseph Perrier Cuvee Royale Brut Champagne *France (12%)*

Length, freshness, balance, elegance and lightness. The nose is delicate, fine and complex. Notes of green apple and vine peach bring a fruity touch. Nice roundness on the palate with long and refreshing finish.

Bottle **47.00**

Pommery Brut Royal Champagne *France (12.5%)*

The signature style of the house. Delicate and elegant with notes of red fruits and good vivacity.

Bottle **59.80**

ROSÉ

Canyon Road White Zinfandel *USA (9%)*

This wine is light-bodied with hints of strawberry, cherry and watermelon flavours and has a smooth, crisp finish.

175ml **5.25** | 250ml **7.15** | Bottle **20.45**

Principato Pinot Grigio Blush *Italy (12%)*

Appealing, lightly aromatic nose with redcurrant and cherry notes. The palate is crisp with strawberry and white peach fruit characters leading to a fresh and juicy finish.

175ml **5.35** | 250ml **7.30** | Bottle **20.95**

WHITE

Jean Julien Chardonnay *France (12.5%)*

Fresh tropical fruit nose. Bright fruity mouth with mid palate weight and a tight finish.

175ml **5.90** | 250ml **8.05** | Bottle **23.05**

La Cour Des Dames Pinot Gris *France (12.5%)*

Floral and fruity on the nose with notes of roses, lychees, lemons and grapefruit. On the palate, the wine is smooth and fresh, lovely and lively, and shows mineral notes on the finish.

175ml **6.15** | 250ml **8.35** | Bottle **23.90**

La Lancelotta Gavi *Italy (11.5%)*

Fresh citrus and stone fruit aromas, with lightly floral notes. The palate has apple and pear characters balanced by hints of apricot, white spice and crisp lemony acidity on the finish.

Bottle **28.15**

Principato Pinot Grigio *Italy (12%)*

Shows delicate, floral and fruity aromas with a hint of stone fruit. The palate is crisp with citrus characters and a limey, refreshing finish.

175ml **5.45** | 250ml **7.50** | Bottle **21.35**

Squealing Pig Sauvignon Blanc *New Zealand (13.5%)*

Exploding with lime, pineapple and fresh cut grass on the nose. On the palate, lime coupled with zingy grapefruit and white peach.

175ml **6.20** | 250ml **8.50** | Bottle **24.35**

RED

Beachhouse Shiraz *South Africa (13.5%)*

Deep ruby red with a beautiful purple hue. A nose of blackberry, spice and all things nice. A smooth velvety tannin structure with loads of black fruits married with elegant spices.

175ml **5.70** | 250ml **7.80** | Bottle **22.20**

Bouchon Reserva Cabernet Sauvignon *Chile (14%)*

This classic cabernet boasts notes of blackcurrant, cherry and other black and red fruits. It presents soft, elegant tannins and great balance.

Bottle **29.90**

Canyon Road Merlot *USA (13%)*

With a soft and elegant mouthfeel, this wine has deep flavours of rich cherries and jammy blackberries, followed by hints of vanilla and spice.

175ml **5.25** | 250ml **7.15** | Bottle **20.45**

Gabbiano Chianti Classico *Italy (13%)*

Classic red cherry fruit with spicy notes of white pepper and nutmeg on the finish.

Bottle **28.15**

Lodez Pinot Noir *France (12%)*

Bright, ruby colour. A complex intertwining of fruity and savoury aromas and flavours of wild cherry, raspberries and mulberries.

175ml **5.45** | 250ml **7.50** | Bottle **21.35**

Squealing Pig Malbec *Argentina (13.5%)*

Bursting with dark fruit flavours and hints of leather and spice, the richly fruited palate is balanced superbly by the tannins and acidity of the long supple finish.

175ml **6.55** | 250ml **9.00** | Bottle **25.60**

125ml wine measures also available on selected products.

BEER AND CIDER

DRAUGHT

Brewdog Punk IPA (5.2%) Half **3.10** | Pint **6.05**

Belhaven Best (3.2%) Half **2.35** | Pint **4.60**

Guinness (4.1%) Half **2.55** | Pint **5.05**

Madri (4.6%) Half **2.50** | Pint **4.95** | Pitcher **18.35**

Piperdam Ale (3.9%) Half **2.35** | Pint **4.60**

Tennent's (4%) Half **2.35** | Pint **4.60**

Aspall (4.5%) Half **2.40** | Pint **4.70**

BOTTLES

Budweiser (4.5%) 330ml **4.30**

Corona (4.5%) 330ml **4.30**

Peroni (5.1%) 330ml **4.30**

Peroni Gluten Free (5.1%) 330ml **4.30**

Rekorderlig Strawberry and Lime (4%) 500ml **5.45**

Rekorderlig Wild Berries (4%) 500ml **5.45**

NON-ALCOHOLIC

Peroni Alcohol Free 74 kcal 330ml **4.30**

OTHER BOTTLED

WKD Blue (4%) 275ml **4.30**

WKD Orange and Passion Fruit (4%) 275ml **4.30**

WKD Pink Gin (4%) 275ml **4.30**

SPIRITS All spirits served in 25ml measures

LIQUEUR

Amaretto Disaronno (28%)	3.55
Archers (18%)	3.15
Cointreau (40%)	3.15
Drambuie (40%)	3.15
Malibu (21%)	3.15
Tia Maria (20%)	3.15

GIN

AxleJack (40%)	3.65
Bombay Sapphire (40%)	3.65
Gordon's (37.5%)	3.15
Gordon's Pink (37.5%)	3.30
Hendrick's (41.4%)	3.80
Malfy con Limone (Lemon) (41%)	4.30
Slingsby Rhubarb (40%)	4.30
Tanqueray (43.1%)	3.80
Tanqueray Sevilla (41.3%)	3.80
Tarquin's Blood Orange (38%)	4.10
Tarquin's Rhubarb and Raspberry (38%)	4.10

VODKA

Ciroc (40%)	3.80
Grey Goose (40%)	3.80
Grey Goose Citron (40%)	3.80
Ketel One (40%)	3.65
Smirnoff Red (37.5%)	3.15
Smirnoff Mango and Passionfruit (35%)	3.65
Smirnoff Raspberry Crush (37%)	3.65
Smirnoff Vanilla (37.5%)	3.65

WHISKY

Glenfiddich (40%)	4.45
Glenmorangie (46%)	4.45
Haig Club Mediterranean Orange (35%)	3.05
Highland Park (40%)	4.35
Jack Daniels (40%)	3.15
Jameson (40%)	3.15
Johnnie Walker Black (40%)	3.30
Johnnie Walker Red (40%)	3.15
Southern Comfort (35%)	3.15

RUM

Bacardi (37.5%)	3.15
Captain Morgan (40%)	3.15
Captain Morgan Sliced Apple (25%)	3.65
Captain Morgan Spiced (35%)	3.15
Captain Morgan Tiki Mango and Pineapple (25%)	3.65
Captain Morgan White (37.5%)	3.15
Havana Club Especial (40%)	3.80
Kraken Black Spiced (40%)	3.80

BRANDY

Courvoisier (40%)	3.30
Jules Clairom (36%)	3.15
Martell (40%)	3.15

NON-ALCOHOLIC

Seedlip Grove 42 Citrus 5 kcal	3.15
Seedlip Spice 94 Aromatic 5 kcal	3.15

COCKTAILS

Aperol Spritz A refreshing aperitif, served the classic Italian way with fresh orange, prosecco and soda.	7.95	Long Island Iced Tea Five classic white spirits; vodka, rum, gin, Cointreau and tequila, shaken with a sweet and sour mix topped with Pepsi Max.	7.95
Espresso Martini Freshly ground coffee is shaken up with vodka, sugar and coffee liqueur to create this rich, dark delight.	7.95	Mojito Fresh mint, lime, white rum and sugar topped with soda water. Enjoy it classic or with spiced rum and ginger ale.	7.95
French Martini Raspberry liqueur, Smirnoff Red and pineapple juice topped with fresh raspberries.	7.95	Piña Colada Enjoy a taste of the Caribbean with this tropical infusion of rum, coconut and pineapple.	7.95
Passion Fruit Martini Vodka is shaken with passion fruit liqueur, pineapple juice and vanilla syrup. Served with a shot of prosecco on the side.	7.95	Strawberry Daiquiri Beat the heat with this classic sweet and sour sensation! White rum, sweet strawberries and zesty lime.	7.95
Rosamunde <i>Created by Isobel Ings, our Bartender of the Year 2022.</i> A refreshing blend of Away Resorts AxleJack Gin and Cointreau, topped with elderflower tonic and lemon juice, with a hint of sea salt and rosemary.	7.95	Sun on The Beach The epitome of easy drinking! Vodka, Archers and a fruity mix of orange and cranberry juice.	7.95

MOCKTAILS

Virgin French Martini 95 kcal A rich and indulgent marriage of raspberry, cranberry, pineapple and lime; without the morning headache.	5.35	Missing Sunrise 161 kcal A colourful, flavoursome mocktail that mixes cranberry and orange juice and layers of grenadine.	5.35
Virgin Passion Fruit Martini 113 kcal They don't come much fruitier than this vibrant blend of real passion fruit and fresh pineapple juice.	5.35	No-jito 212 kcal This refreshing twist on the classic Mojito uses apple to give it a fruity kick.	5.35

SOFT DRINKS

SPARKLING

Lemonade Child 1.50 / Small 2.95 / Regular 3.30
5 kcal / 8 kcal / 10 kcal

Pepsi Max Child 1.50 / Small 2.95 / Regular 3.30
1 kcal / 2 kcal / 2 kcal

Diet Pepsi Child 1.50 / Small 2.95 / Regular 3.30
1 kcal / 2 kcal / 2 kcal

Pepsi 135 kcal 3.30

Fanta Orange 99 kcal 3.30

Britvic 55 Apple 127 kcal 3.15

Fentimans Rose Lemonade 113 kcal 3.30

JUICES

J2O Apple and Raspberry 62 kcal 3.30

J2O Orange and Passion Fruit 62 kcal 3.30

Apple Juice 96 kcal 1.70

Orange Juice 94 kcal 1.70

Pip Organic Cloudy Apple 77 kcal 2.05

Pip Organic Strawberry and Blackcurrant 74 kcal 2.05

MIXERS

Britvic Slimline Tonic 2 kcal 1.70

Britvic Tonic 38 kcal 1.70

Fever-Tree Slimline Tonic 30 kcal 2.20

Fever-Tree Elderflower 36 kcal 2.20

Fever-Tree Ginger Ale 68 kcal 2.20

Fever-Tree Indian Tonic 56 kcal 2.20

Fever-Tree Mediterranean Tonic 74 kcal 2.20

WATER

Harrogate Still Water 0 kcal Small 2.40 / Large 4.30

Harrogate Sparkling Water 0 kcal Small 2.40 / Large 4.30



HOT DRINKS

COFFEE

Caffè Latte 144 kcal / 181 kcal Tall 2.95 Grande 3.25

Caffè Americano 11 kcal / 17 kcal 2.55 3.00

Caffè Mocha 196 kcal / 250 kcal 3.65 4.05

Cappuccino 130 kcal / 144 kcal 2.95 3.25

Caramel Macchiato 183 kcal / 234 kcal 3.65 4.05

Espresso 6 kcal / 11 kcal Single 1.95 Double 2.35

TEA

Breakfast Tea 0 kcal Tall 2.40 Grande 2.60

Chai Tea 121 kcal / 155 kcal 3.65 4.05

HOT CHOCOLATE

Classic Hot Chocolate 234 kcal / 284 kcal Tall 3.50 Grande 4.05

ICED COFFEE

Iced Caffè Latte 102 kcal / 126 kcal Tall 2.95 Grande 3.25

Iced Caffè Americano 11 kcal / 17 kcal 2.55 3.00

Iced Caffè Mocha 257 kcal / 337 kcal 3.65 4.05

Iced Caramel Macchiato 159 kcal / 201 kcal 3.65 4.05

ICED TEA

Iced Tea 0 kcal Tall 2.40 Grande 2.60

Iced Chai Tea 121 kcal / 155 kcal 3.65 4.05



ADD A LITTLE EXTRA...

Espresso Extra Shot 6 kcal 0.60

Syrups 6 kcal 0.60

Calories shown are per drink. All prices include VAT. All card and cash tips are shared out to all employees through a system controlled by a team representative. No monies are deducted by Away Resorts. Tips are paid on top of a team member's wage. If you have any queries about how tips are distributed, please ask.

